

■ □ □ □
BEGINNER

CROCUS PETAL EDGING

Christine Guest Designs



Description

Crocus Petal Edging is a folded, double, reversible edging with built in holes to pick up and knit into. This pattern is like those found in a stitch dictionary: no specific yarn suggestions, gauge or needle size.

How to Know if the Yarn Will Work in this Edging

Start with a smooth yarn with multiple plies, trying the needle size from the belly band on the yarn. Make a swatch, launder it, and see how it behaves. I had good luck with both wool and cotton, so soft and stiff both worked.

If the fabric pleases you after it dries, then try picking up stitches in the folded pairs of yarn overs, and continue your experiments. See if you like the same yarn added to the edging, a contrasting one, or one of a different weight.

How to Choose Needle size

Start with the size on the belly band of the yarn. If your swatch is too loose and floppy, try again with smaller needles. If it is too stiff or hurts your hands, try again with larger needles. When it feels right and the fabric is nice, that is your needle size.

How to know how much Yarn to allow for your Project

Measure how long your swatch of edging is, then weigh it. Divide the weight by

the length of the folded edging (If you are ruffling the edge, measure it ruffled) This tells you how much yarn you need (in weight) for each unit of length. If you multiply your desired length by this number, it will tell you how much yarn (in weight) you need.

For example: let's say your swatch weighs 2.5 grams and is 10 cm of long. 2.5 grams/10 cm gives .25 grams/cm. If you want to make an edging that is 80 cm long, you will need to multiply 80 cm by (.25 grams/cm) and your answer will be 20 grams of yarn. Weigh the rest of your yarn and make sure that you have enough. A bit extra is always a good idea, especially for tight knitters.




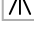

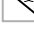

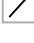




Where should I put Crocus Petal Edging?

- Along the bottom of a shawl
- Beginning and ending of a ribbed scarf (show off your grafting!)
- Lower edge of a summer top
- Hem of a dress
- Cuff of a sleeve
- Wherever you want some whimsy

Abbreviations

- k2tog** : Knit 2 stitches together. 1 st decreased.
- k3tog** : Knit 3 stitches together. 2 sts decreased.
- knit into fbf** : Knit into front, back, front of same stitch. 2 sts increased.
- knit into fb** : Knit into front and back of same stitch. 1 st increased.
- knit** : Knit.
- sl2, k1, p2sso** : Slip 2 stitches together, k1, then pass slipped stitches over. 2 sts decreased.
- ssk** : Slip, slip, knit. 2 sts decreased.
- sssk** : Slip, slip, slip, knit. 2 sts decreased.
- yo** : Yarn over. 1 st increased.

Key

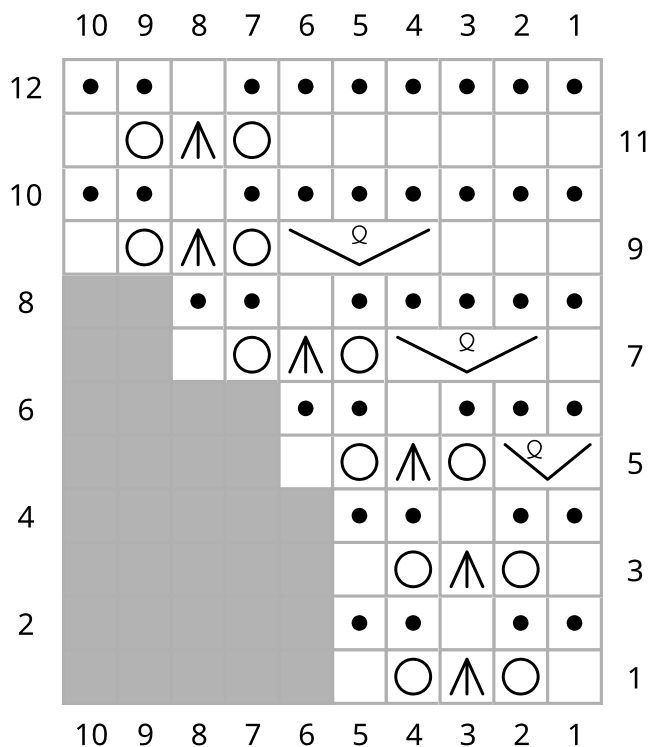
-  RS: knit
WS: purl
-  RS: purl
WS: knit
-  yo
-  RS: sl2, k1, p2sso
WS: sl2, p1, p2sso
-  RS: knit into fbf
WS: purl into fbf
-  RS: knit into fb
WS: purl into fb
-  RS: k3tog
WS: p3tog
-  RS: k2tog
WS: p2tog
-  RS: ssk
WS: ssp
-  RS: sssk
WS: sssp
-  grey no stitch
-  Repeat

Note

If the edging is to be used in a tubular setting, skip the Beginning section and

continue on to the Main repeat.

Beginning



Cast on 5 sts.

Row 1 (RS): K1, yo, sl2, k1, p2sso, yo, k1. (5 sts)

Row 2 (WS): K2, p1, k2.

Rows 3 - 4: Repeat rows 1 - 2.

Row 5: Kfb, yo, sl2, k1, p2sso, yo, k1. (6 sts)

Row 6: K2, p1, k3.

Row 7: K1, kfbf, yo, sl2, k1, p2sso, yo, k1. (8 sts)

Row 8: K2, p1, k5.

Row 9: K3, kfbf, yo, sl2, k1, p2sso, yo, k1. (10 sts)

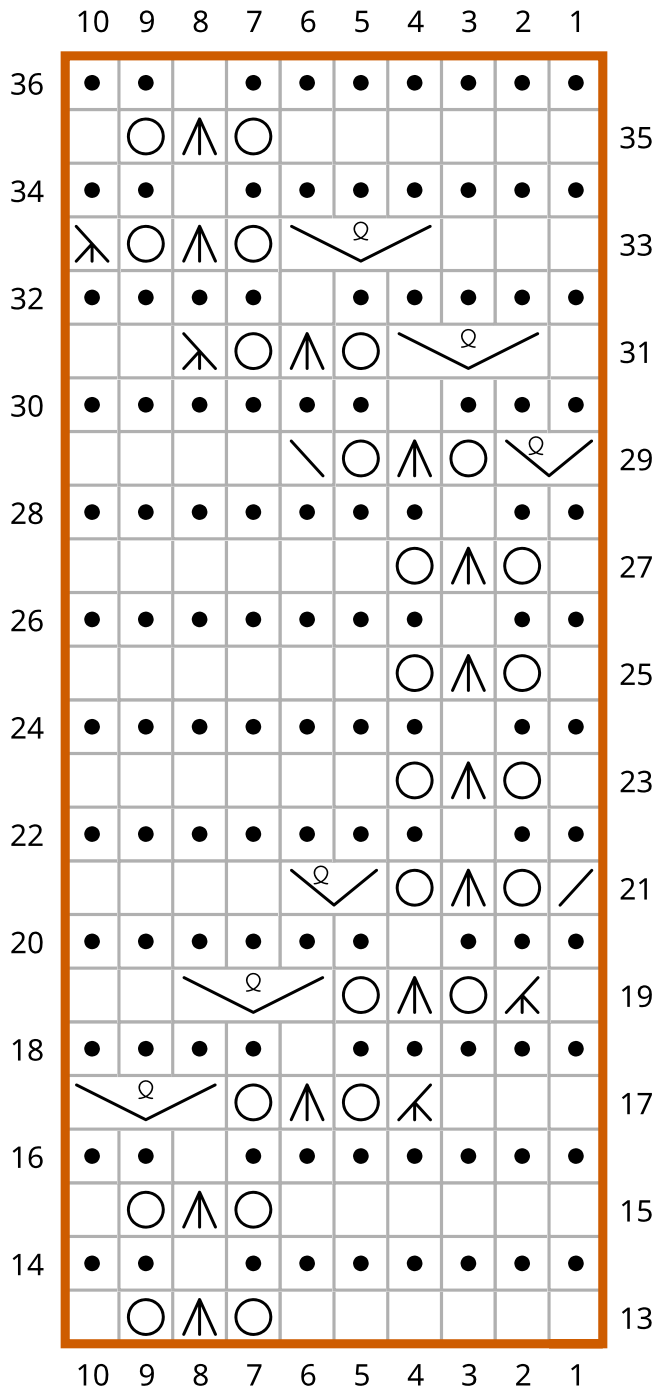
Row 10: K2, p1, k7.

Row 11: K6, yo, sl2, k1, p2sso, yo, k1.

Row 12: Repeat row 10.

Continue on with Main Repeat.

Main Repeat



until the piece is long enough and graft the cast on edge to the last row without twisting.

Row 13 (RS): K6, yo, sl2, k1, p2sso, yo, k1.
(10 sts)

Row 14 (WS): K2, p1, k7.

Rows 15 - 16: Repeat rows 13 - 14.

Row 17: K3, k3tog, yo, sl2, k1, p2sso, yo, kfbf.

Row 18: K4, p1, k5.

Row 19: K1, k3tog, yo, sl2, k1, p2sso, yo, kfbf, k2.

Row 20: K6, p1, k3.

Row 21: K2tog, yo, sl2, k1, p2sso, yo, kfb, k4.

Row 22: K7, p1, k2.

Row 23: K1, yo, sl2, k1, p2sso, yo, k6.

Rows 24 - 27: Repeat rows 22 - 23.

Row 28: Repeat row 22.

Row 29: Kfb, yo, sl2, k1, p2sso, yo, sl1, k1, pssso, k4.

Row 30: Repeat row 20.

Row 31: K1, kfbf, yo, sl2, k1, p2sso, yo, sssk, k2.

Row 32: Repeat row 18.

Row 33: K3, kfbf, yo, sl2, k1, p2sso, yo, sssk.

Row 34: Repeat row 14.

Row 35: Repeat row 13.

Row 36: Repeat row 14. , sl2, k1, p2sso, yo, sssk.

Row 35: Repeat row 13.

Repeat Rows 13 - 35 until the piece is as long as you want it to be, minus the length of the beginning. Continue on with end.

Note

If the edging is to be used in a tubular setting, skip the Beginning section, cast on 10 sts provisionally, work the Main Repeat

End

	10	9	8	7	6	5	4	3	2	1
60	•	•		•	•					
		○	∧	○						
58	•	•		•	•					
	∧	○	∧	○						
56	•	•	•	•		•	•			
			∧	○	∧	○				
54	•	•	•	•	•	•		•	•	
					∖	○	∧	○		
52	•	•	•	•	•	•	•		•	•
							○	∧	○	
50	•	•	•	•	•	•	•		•	
							○	∧	○	
48	•	•	•	•	•	•	•		•	
							○	∧	○	
46	•	•	•	•	•	•	•		•	
						∩	○	∧	○	∕
44	•	•	•	•	•	•		•	•	•
			∩			○	∧	○	∧	
42	•	•	•	•		•	•	•	•	
	∩		○	∧	○	∧				
40	•	•		•	•	•	•	•	•	
		○	∧	○						
38	•	•		•	•	•	•	•	•	
		○	∧	○						
37										

Row 37 (RS): K6, yo, sl2, k1, p2sso, yo, k1.
(10 sts)

Row 38 (WS): K2, p1, k7.

Rows 39 - 40: Repeat rows 37 - 38.

Row 41: K3, k3tog, yo, sl2, k1, p2sso, yo, kfbf.

Row 42: K4, p1, k5.

Row 43: K1, k3tog, yo, sl2, k1, p2sso, yo, kfbf, k2.

Row 44: K6, p1, k3.

Row 45: K2tog, yo, sl2, k1, p2sso, yo, kfb, k4.

Row 46: K7, p1, k2.

Row 47: K1, yo, sl2, k1, p2sso, yo, k6.

Rows 48 - 51: Repeat rows 46 - 47.

Row 52: Repeat row 46.

Row 53: K1, yo, sl2, k1, p2sso, yo, ssk, k4. (9 sts)

Row 54: K6, p1, k2.

Row 55: K1, yo, sl2, k1, p2sso, yo, sssk, k2. (7 sts)

Row 56: K4, p1, k2.

Row 57: K1, yo, sl2, k1, p2sso, yo, sssk. (5 sts)

Row 58: K2, p1, k2.

Row 59: K1, yo, sl2, k1, p2sso, yo, k1.

Row 60: Repeat row 58.

Bind off all sts.

Finishing

Weave in ends. Fold along the central rib with the knitted stitch up. To use as the bottom edging with a bit of ruffling, pick up and knit through the doubled yos, or pick up and knit alternated with pick up and purl. For a flat, reversible edging, pick up and knit through the doubled yos, then yo. Treat the yo as a stitch on the next row or round.

To add to the side of your work, treat your work as an edging being applied to the petals by picking up and knitting a stitch through the double holes as you come to that selvalge, then decreasing that picked up stitch away on the next row.

To add the petals to the top of an edge of knitting, graft the working stitches to the folded edge, treating the doubled yos as the stitches.

If you want to edge a woven blanket in Crocus Petals, bind the fabric first (unless it is fleece and has no fraying ends) whip stitch the doubled yos to the blanket.

Designer Christine Guest

- Buy my other patterns at <https://www.christineguestdesigns.com/blog/buy-knit-and-crochet-patterns-as-pdf-downloads/>,
- Read my blog at <http://www.christineguestdesigns.com/blog/>.
- Sign up for my newsletter at <https://www.christineguestdesigns.com/blog/im-starting-a-newsletter/>
- e-mail me for pattern support questions or crafting chat at <mailto:christine@christineguestdesigns.com>. It might take me up to 24 hours to respond, and I try to stay off the internet on Sundays.

Terms of Use

This pattern is for personal, non-commercial use. You may sell an edging you knit from it at a charity sale. You may use this as a project for your knitting class, as long as each of your students sign up for my newsletter and download their own copy